

CATALOGO 2024 / CATALOGUE 2024








**GALTA**



# GT - SBSP 1000 TP

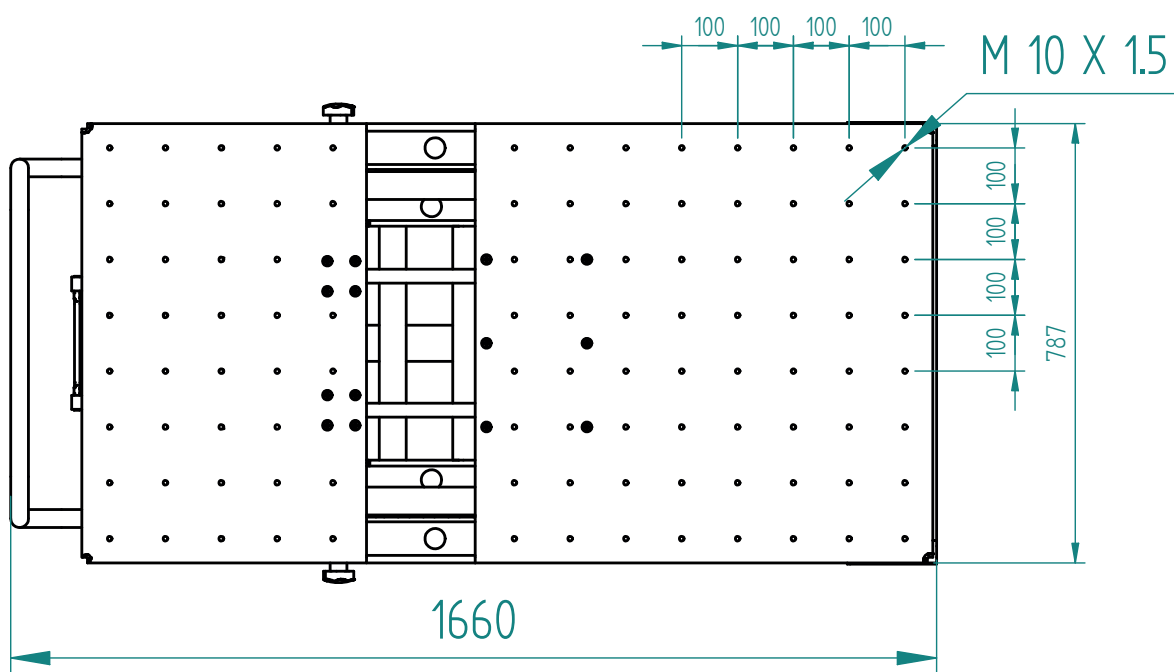
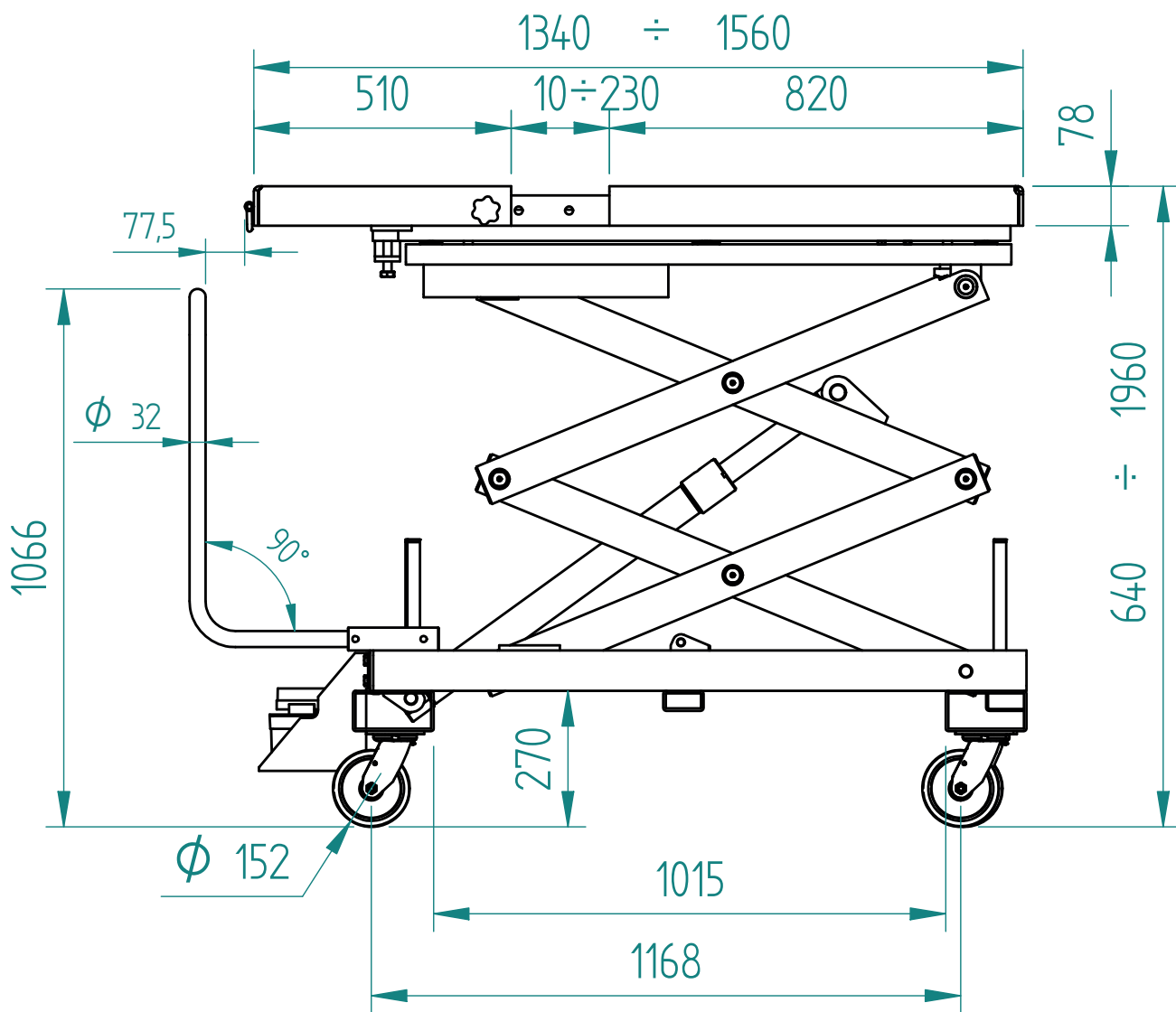
**1.000 Kg**

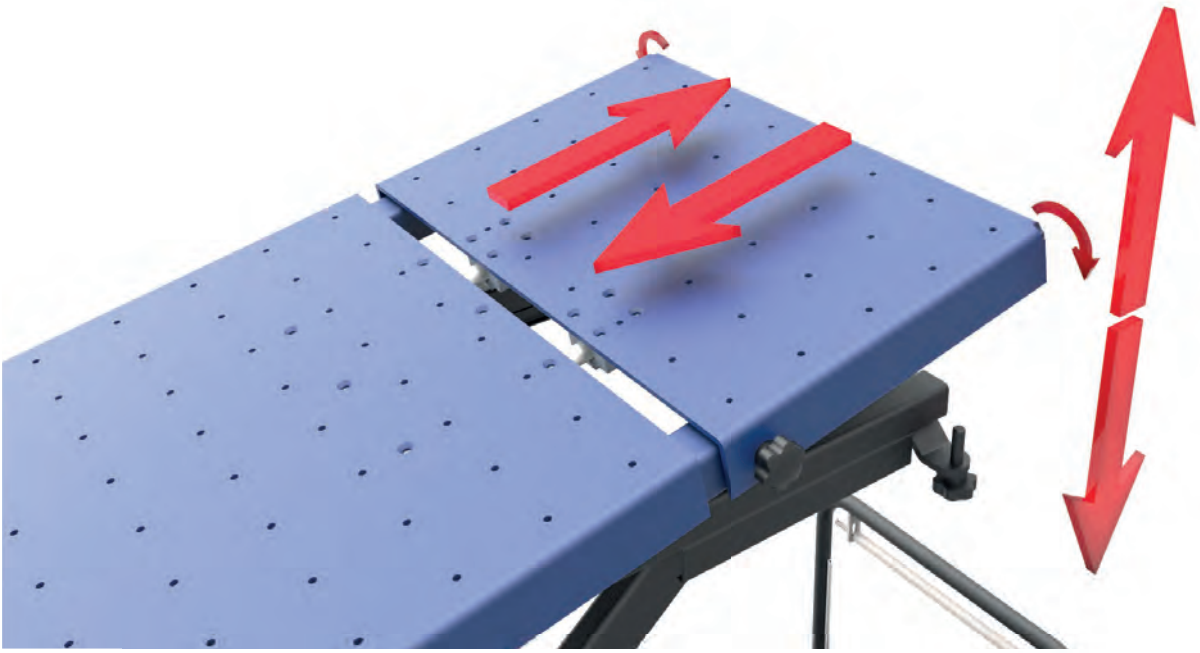


-  Sollevatore mobile per batterie a doppia forbice
-  Mobile battery lift with double scissors
-  Mobiler Lifter für Batterien mit Doppelschere
-  Elévateur mobile pour batteries à double ciseaux
-  Elevador móvil para baterías con doble tijera



DATI TECNICI	TECHNICAL DATA	TECHISCHE DATEN	DONNÉES TECHNIQUES		
Portata max.	Max. capacity	Max. Tragfähigkeit	Portée max.	kg	1000
Tempo di salita / discesa	Lifting / lowering time	Hubfahrt- / Senkfahrdauer	Temps de montée / descente	s	35/20
Alimentazione	Power supply	Stromversorgung	Alimentation	in 6/8 bar (120 on working)	
Peso totale	Total weight	Gesamtgewicht	Poids total	Kg	450
Altezza sollevamento	Lift height	Höhe Aufzug	Altura ascensor	mm	640-1960
Tensione circuito comandi	Circuit voltage command	Leerlaufspannung Befehl	Circuit de commande de tension	V	--





**OPTIONAL: PUMP WITH REMOTE CONTROL**  
**OPTIONAL: POMPA CON CONTROLLO REMOTO**



### MECHANICAL SAFETY LOCK WITH PNEUMATIC RELEASE SICURA MECCANICA CON SGANCIO PNEUMATICO

- Adatto e pratico per sollevare motori auto / cambi / batterie.
- Il sollevatore ha la copertura traslante con possibilità di aprirsi e permettere all'operatore di avere lo spazio per sganciare la batteria della vettura comodamente.
- il movimento del ponte è pneumatico
- Geeignet und praktisch zum Heben von Automotoren / Getrieben / Batterien.
- Der Aufzug hat eine Übersetzungsabdeckung mit der Möglichkeit, den Mechaniker Platz zu geben, um die Autobatterie bequem freizugeben.
- Die Bewegung der Brücke ist pneumatisch
- Adecuado y práctico para levantar motores de automóviles / cajas de cambios / baterías.
- El puente tiene una plataforma que se abre y permite que el operador tenga espacio para liberar la batería del automóvil cómodamente.
- El movimiento del puente es neumático.
- Suitable and practical for lifting car engines / gearboxes / batteries for electric or hybrid cars.
- The lift has a translating cover with the possibility of opening and allowing the operator to have space to release the car battery comfortably.
- the movement of the lift is pneumatic.
- Convient et pratique pour soulever les moteurs / boîtes de vitesses / batteries de voiture.
- Le pont a une plate-forme qui s'ouvre et permet à l'opérateur d'avoir suffisamment d'espace pour libérer la batterie de la voiture confortablement
- le mouvement du pont est pneumatique






## BATTERY LIFTS CAN BE USED FOR SEVERAL USE INSTALLING GEAR BOX - ENGINES - BATTERY





# GT - SBSP 1500 TP

**1.500 Kg**

-  Sollevatore mobile per batterie a doppia forbice
-  Mobile battery lift with double scissors
-  Mobiler Lifter für Batterien mit Doppelschere
-  Elévateur mobile pour batteries à double ciseaux
-  Elevador móvil para baterías con doble tijera



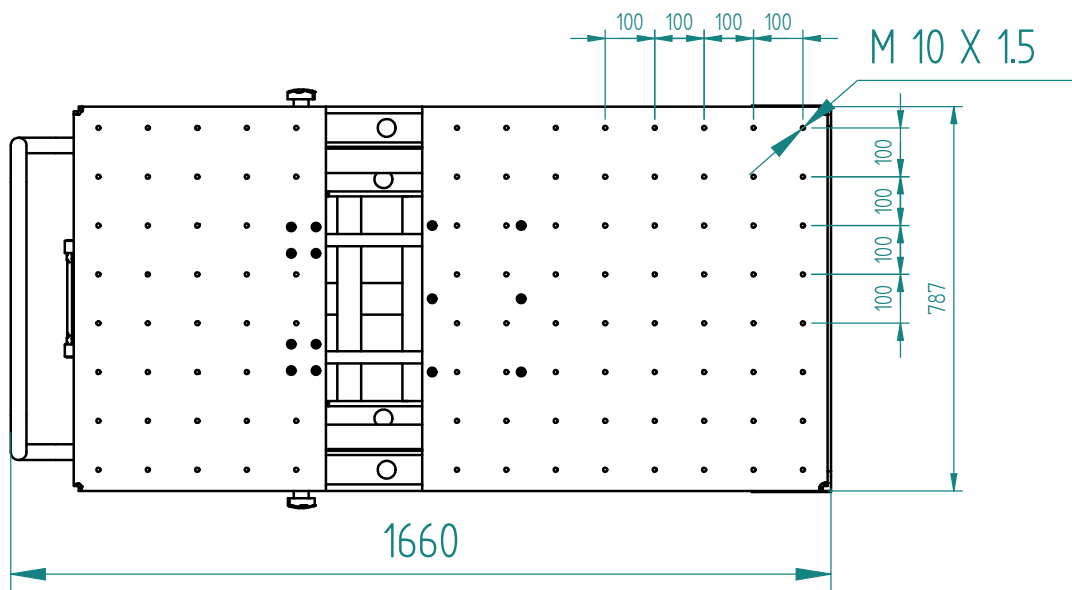
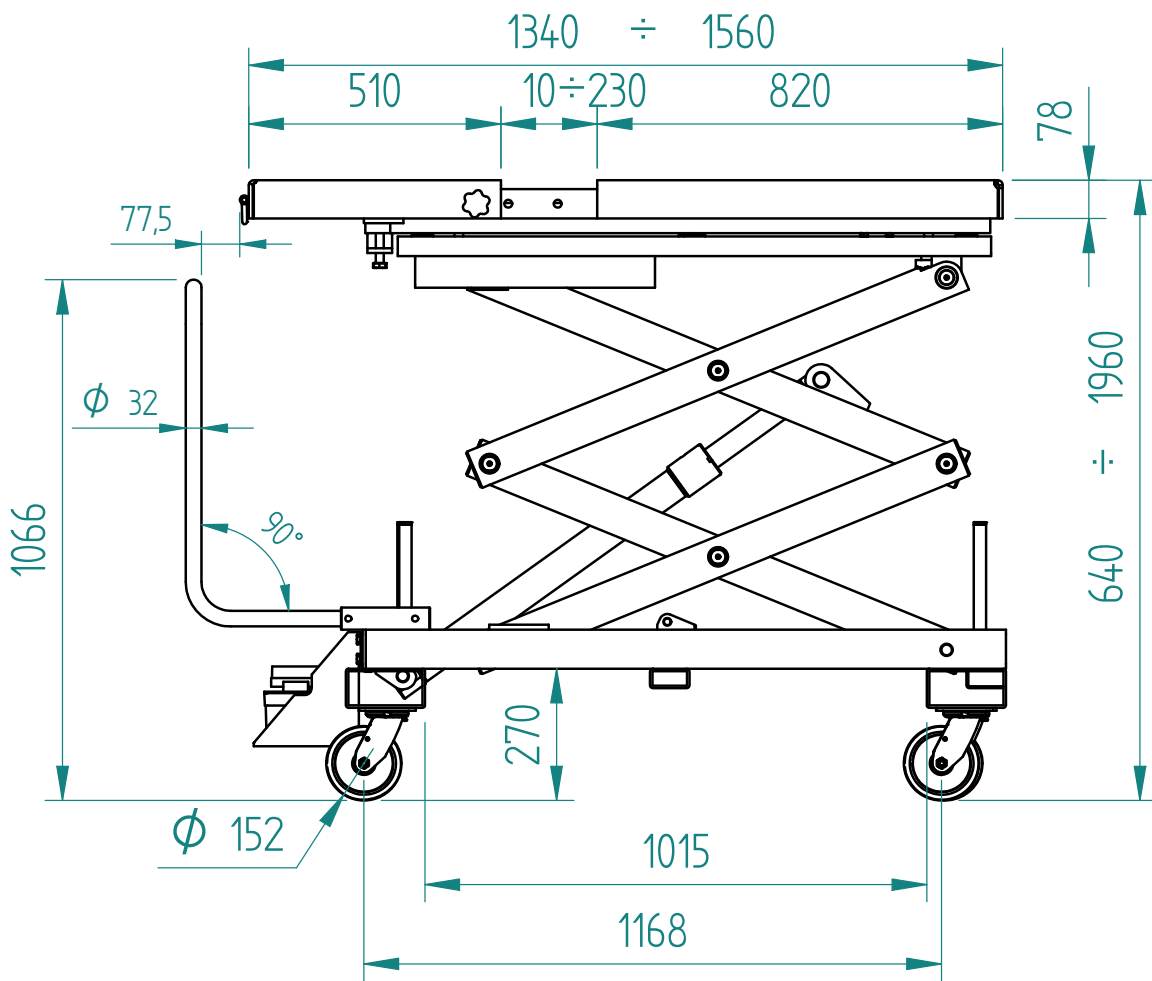
MECHANICAL SAFETY LOCK  
WITH PNEUMATIC RELEASE

SICURA MECCANICA  
CON SGANCIO PNEUMATICO

**OPTIONAL: PUMP WITH REMOTE CONTROL**  
**OPTIONAL: POMPA CON CONTROLLO REMOTO**



DATI TECNICI	TECHNICAL DATA	TECHISCHE DATEN	DONNÉES TECHNIQUES		
Portata max.	Max. capacity	Max. Tragfähigkeit	Portée max.	kg	1500
Tempo di salita / discesa	Lifting / lowering time	Hubfahrt- / Senkfahrdauer	Temps de montée / descente	s	35/20
Alimentazione	Power supply	Stromversorgung	Alimentation		in 6/8 bar (120 on working)
Peso totale	Total weight	Gesamtgewicht	Poids total	Kg	450
Altezza sollevamento	Lift height	Höhe Aufzug	Altura ascensor	mm	640-1960
Tensione circuito comandi	Circuit voltage command	Leerlaufspannung Befehl	Circuit de commande de tension	V	--



# GT - SBSP 1000 TP2

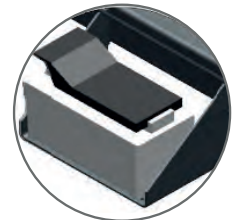
1.000 Kg

# GT - SBSP 1500 TP2

1.500 Kg

It facilitates the management of the charge-discharge of the batteries in the new electric cars. made of resistant steel that can handle loads up to 1000 kg. the battery pack can be easily loaded on the trolley platform, lowered to a safe transport height and raised again to unload everything at its destination. It is pneumatic hydraulic drive. Two adjustment screws for securing top when used as work bench surface. Detent pin for locking table top in three open position.

Facilita la gestione del carico-scarico delle batterie nelle nuove auto elettriche. costruiti in acciaio resistente che può gestire carichi fino a 1000 kg. il pacco batterie può essere facilmente caricato sulla piattaforma del carrello, abbassati ad un'altezza di trasporto sicura e sollevati di nuovo per scaricare il tutto a destinazione. È azionamento idraulico pneumatico. Due viti di regolazione per fissare la parte superiore quando utilizzate come superficie del banco da lavoro. Perno di arresto per bloccare il piano del tavolo in tre posizioni aperte.



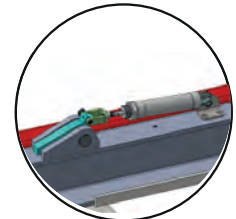
Pneumatic foot pump



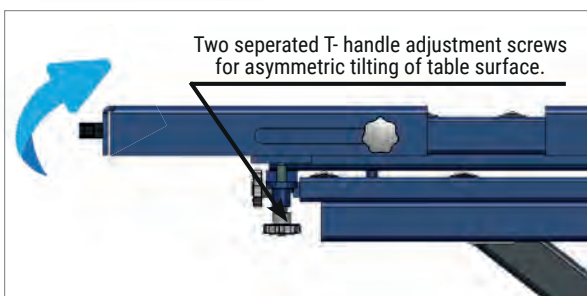
Mechanical safety lock



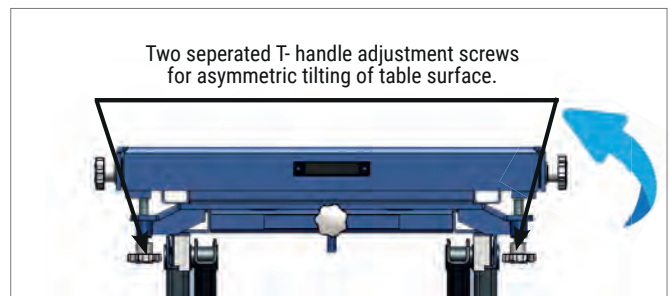
The pulling handle can be put down



Standard pneumatic release for the lock



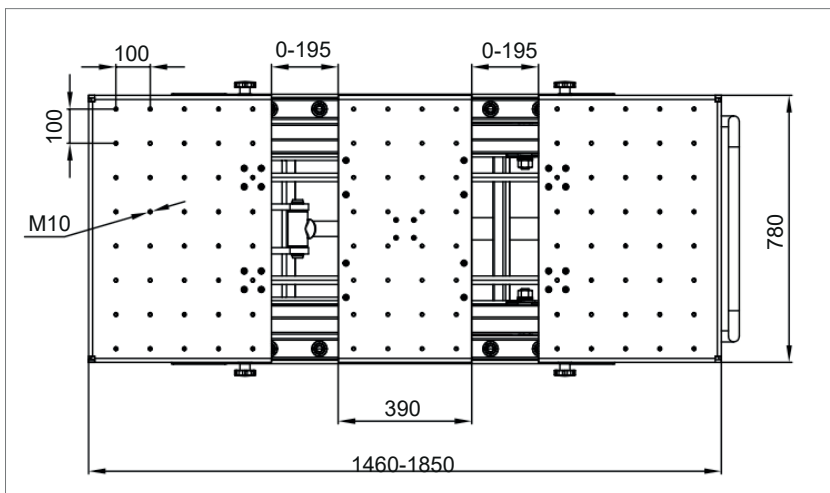
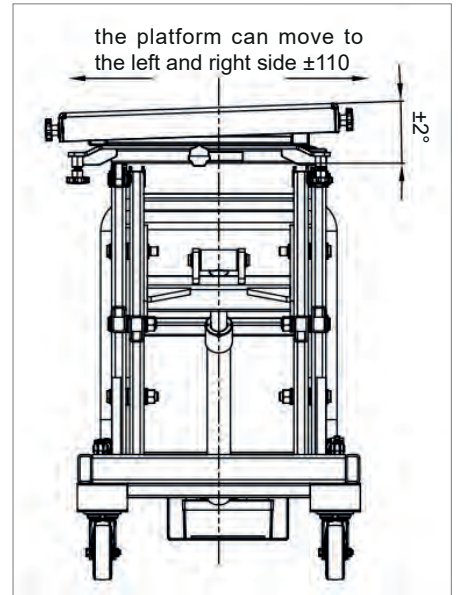
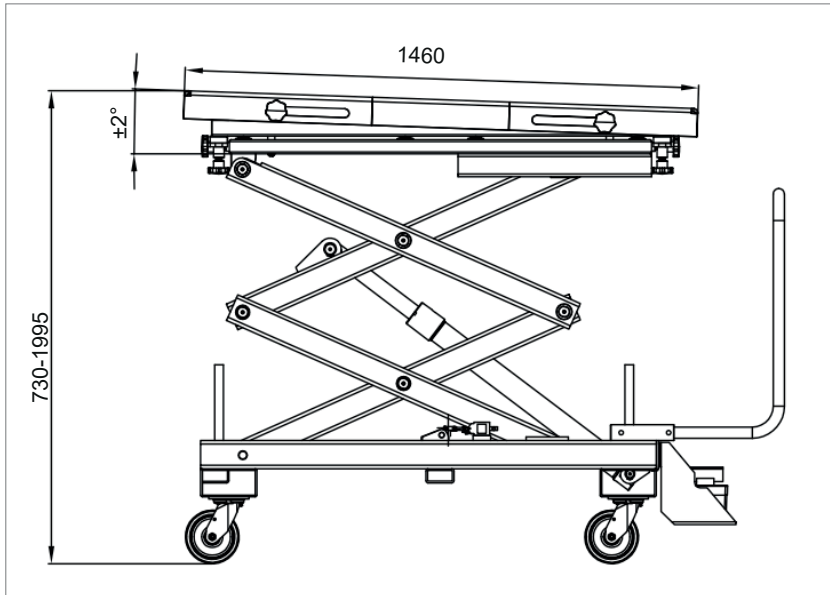
Tilt back and forth by 2°



Tilt left and right by 2°



## DIMENSION DRAWING - DIAGRAMMA DELLE DIMENSIONI



All our product are supplied with sandblasting. STANDARD COLOURS: GREY RAL 7016 - BLUE RAL 5002

Su tutti i ponti viene applicato il trattamento di sabbiatura. COLORI STANDARD: GRIGIO RAL 7016 -BLU RAL 5002

## TECHNICAL FEATURES - DATI TECNICI

Max lift capacity Portata massima di sollevamento	1000kg /1500 Kg
Operating height: Altezza operativa	730- 1995
Standard Weight Peso standard	441 Kg / 449 Kg



**GALTA**

Vat. n° 04058700248

Via Vittorio Lombardi 19/21 - 36075 Montecchio Maggiore (VI) Italy

Phone : +39 0444 493977 - Fax: +39 0444 495999

[www.galta.it](http://www.galta.it) - [info@galta.it](mailto:info@galta.it)

