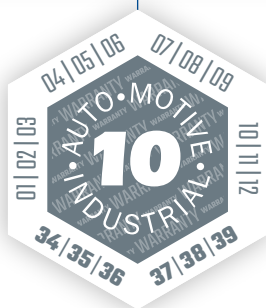




AUTO MOTIVE INDUSTRIAL a.s.
CZECH MANUFACTURER OF
HYDRAULIC LIFTS AND ACCESSORIES WITH 10 YEARS WARRANTY

PRODUCT CATALOGUE

www.automotive.cz

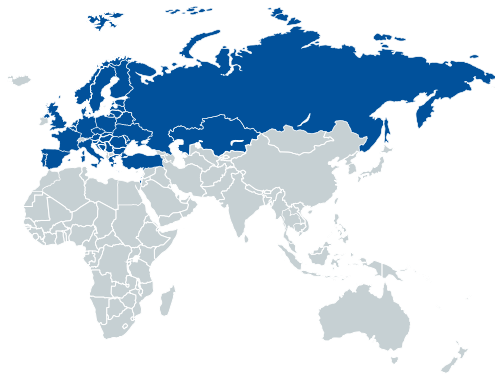


About the company

AUTO MOTIVE INDUSTRIAL a.s.

AUTO MOTIVE INDUSTRIAL a.s. is a purely Czech company with a **long tradition of engineering production**. Currently it is using its rich experience mainly in the main production program, which is the production of automotive hydraulic lifts.

The company produces **hydraulic lifts of various types and variants**, complemented by a wide range of accessories, which are maximally adapted to the versatile needs of car repair shops and workshops. Approximately **85 %** of AUTO MOTIVE INDUSTRIAL lifts are successfully exported.



50

Countries of distribution



10

Warranty on AMI hydraulic lifts
[years]



40

Type of lifts on offer
[variants]

Support and sales
[Mo – Fr: 07:00-15:30]

+420 461 618 555
info@automotive.cz



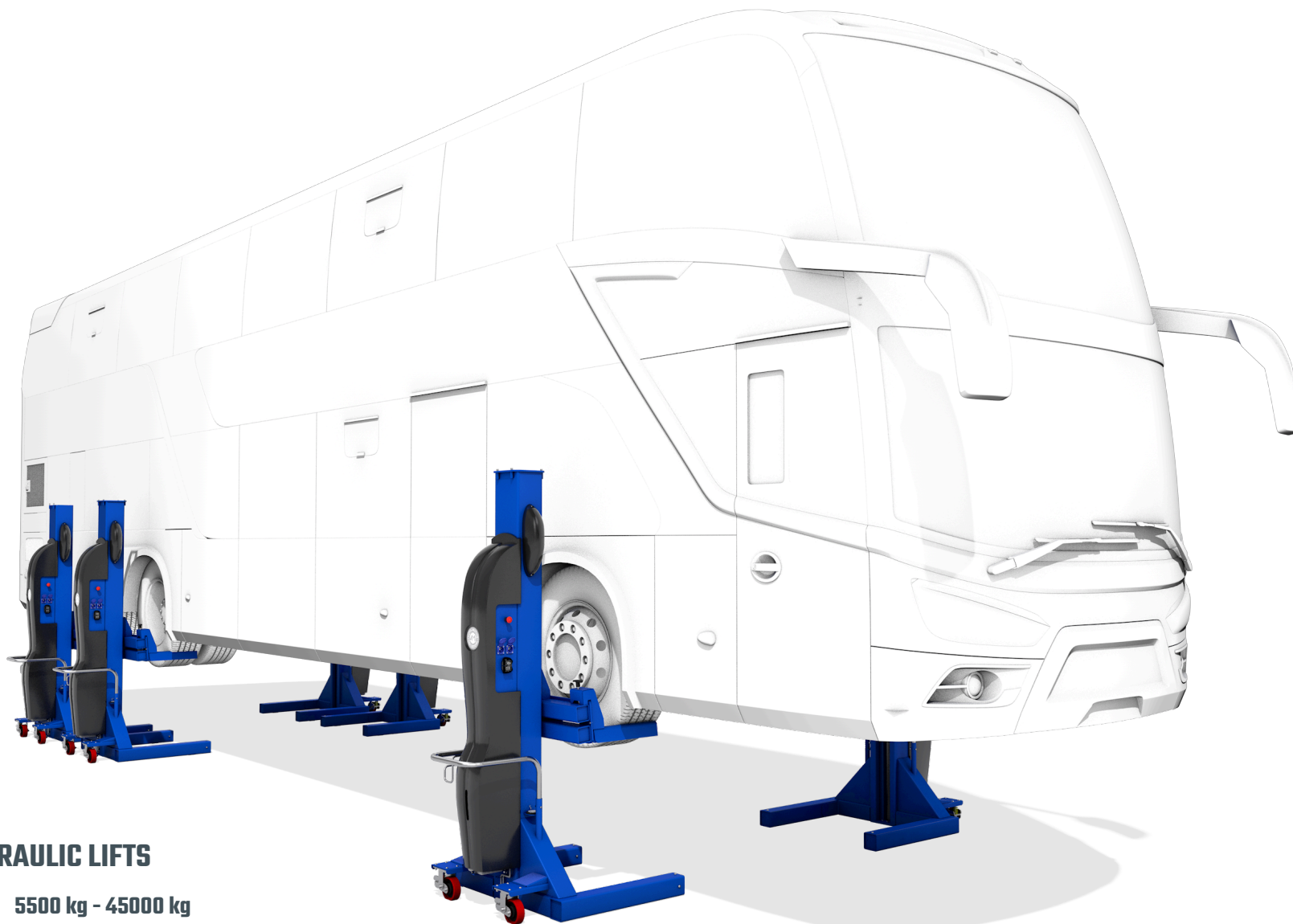
HYDRAULIC 2-POST LIFTS

Load capacity: **3000 kg - 8000 kg**
Application: **passenger vehicles | commercial vehicles | trucks**



HYDRAULIC 4-POST LIFTS

Load capacity: **4000 kg - 5500 kg**
Application: **passenger vehicles | commercial vehicles**



MOBILE 1-POST HYDRAULIC LIFTS

Load capacity: **5500 kg - 45000 kg**

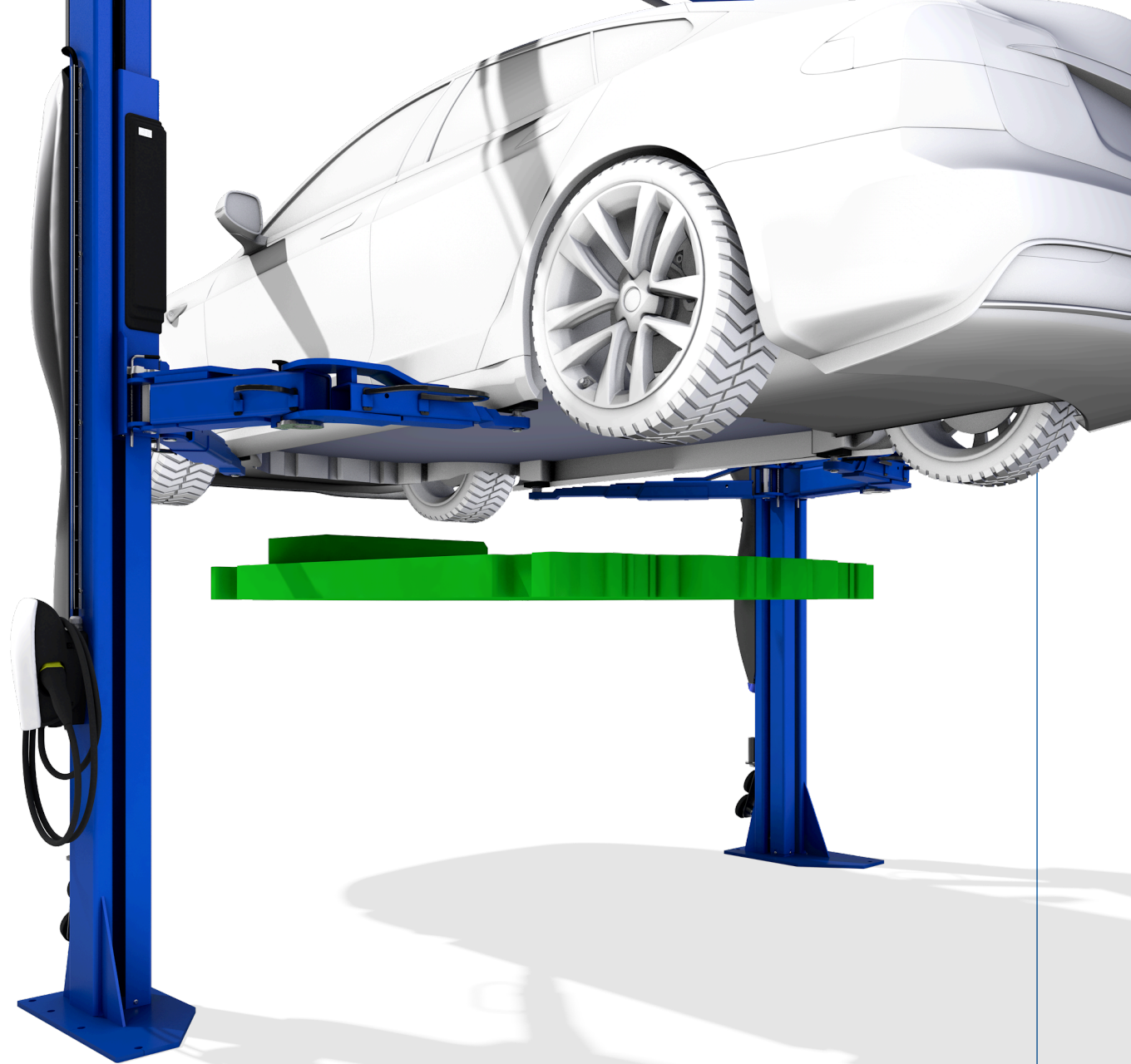
Application: **trucks | buses | agro machines |
trolleybuses | railway vehicles**

ELECTROMOBILITY

Superior lifting solutions

Wide range of accessories and add-ons (air and electric reels with the possibility of installation on both columns, integrated power supply for WALL Boxes for different vehicle brands).

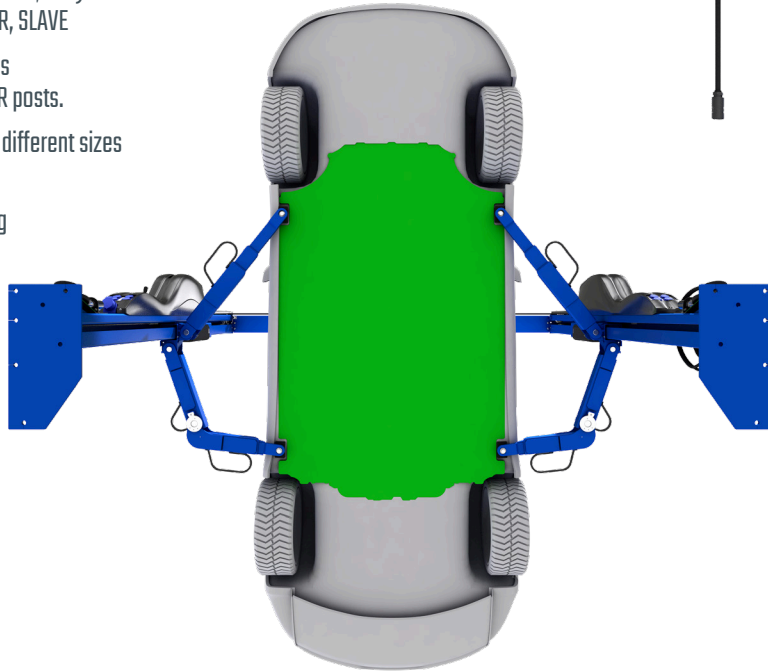
Various solutions for lifting vehicles - 2-stage arms, 3-stage arms, double-jointed arms, vulcanized pads, adapters.



ELECTROMOBILITY

Superior lifting solutions

- Electro boxes (EB1, EB2, EB3) on columns MASTER, SLAVE
- Placing accessories on SLAVE or MASTER posts.
- Vulcanized pads of different sizes and shapes
- Integrated charging connection



DOUBLE-JOINTED ARMS
(ACCESSORIES)



EXTENSION AND SUPPORT HOLDER
(ACCESSORIES)



INTEGRATED POWER SUPPLY FOR CHARGING STATIONS
(ACCESSORIES)



AIR REELS
(ACCESSORIES)



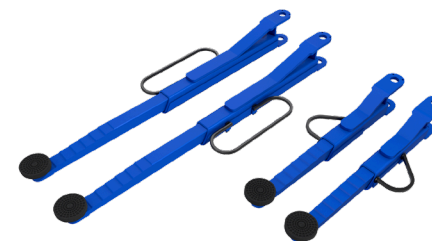
ELECTRIC REELS
(ACCESSORIES)

HYDRAULIC 2-POST LIFTS



AMI 3,0 ECO LINE

- Load capacity 3000 kg
- Push-button control
- Asymmetric design
- Economically profitable hydraulic drive
- Double-acting roof dent protection
- Ergonomic cover
- Arm lock (SLS - self locking system)
- Easy to operate
- Czech made
- Complies to requirements of ČSN EN 1493:2023



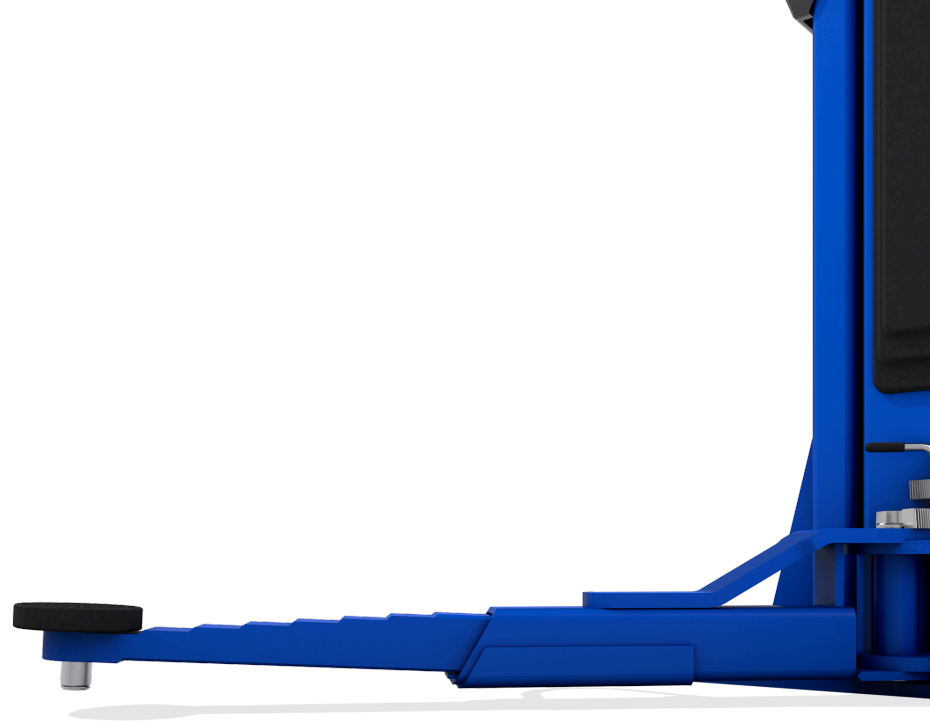
**2 x 2-STAGE SHORT ARMS
2 x 2-STAGE LONG ARMS**
(STANDARD)



ARM LOCK
SLS - SELF LOCKING SYSTEM
(STANDARD)



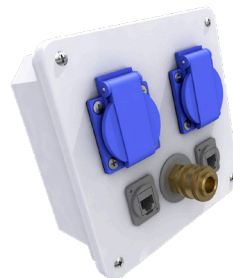
TROLLEY COVER "PUR3"
(STANDARD)



VARIANTS OF ARM CONFIGURATIONS
(MODEL CONFIGURATIONS)



VARIANTS OF VULCANISED PADS AND ADAPTERS
(ACCESSORIES)



VARIANTS OF ELECTRO BOXES
(ACCESSORIES)



AIR REELS
(ACCESSORIES)



TECHNICAL DATA



ADDITIONAL ACCESSORIES

Application:
Passenger vehicles

Maximum load capacity:
3000 kg

Maximum clearance height:
3610 mm

Maximum clearance width:
2220 mm

Maximum arm height:
1885 mm - 1915 mm

Minimum arm height:
90 mm - 120 mm

Column clearance:
2565 mm

Overall width:
3135 mm

Total height:
3740 mm

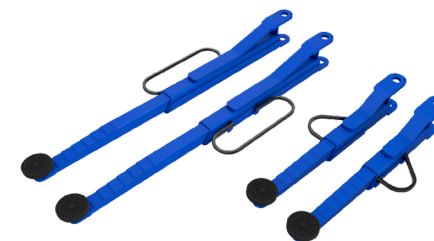
Motor power:
3,0 kW

Minimum thickness of concrete floor C20/25:
135 mm



AMI 3,6 CLASSIC

- Load capacity 3600 kg
- Lever control
- Asymmetric design
- Economically profitable hydraulic drive
- Double-acting roof dent protection
- Set of extensions 50 mm | 100 mm
- Ergonomic cover
- Arm lock (SLS - self locking system)
- Easy to operate
- Czech made
- Complies to requirements of ČSN EN 1493:2023



2 x 2-STAGE SHORT ARMS
2 x 2-STAGE LONG ARMS
(STANDARD)



SET OF EXTENSIONS 50 mm | 100 mm
(STANDARD)



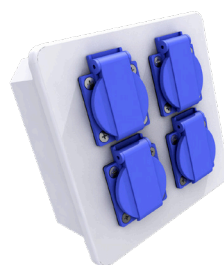
TROLLEY COVER "PUR3"
(STANDARD)



VARIANTS OF ARM CONFIGURATIONS
(MODEL CONFIGURATIONS)



VARIANTS OF VULCANISED PADS AND ADAPTERS
(ACCESSORIES)



VARIANTS OF ELECTRO BOXES
(ACCESSORIES)



ELECTRIC REELS
(ACCESSORIES)



TECHNICAL DATA



ADDITIONAL ACCESSORIES

Application:
Passenger vehicles | commercial vehicles

Maximum load capacity:
3600 kg

Maximum clearance height:
3520 mm

Maximum clearance width:
2220 mm

Maximum arm height:
1840 mm - 1870 mm

Minimum arm height:
90 mm - 120 mm

Column clearance:
2565 mm

Overall width:
3135 mm

Total height:
3670 mm

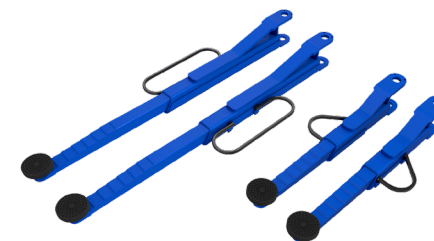
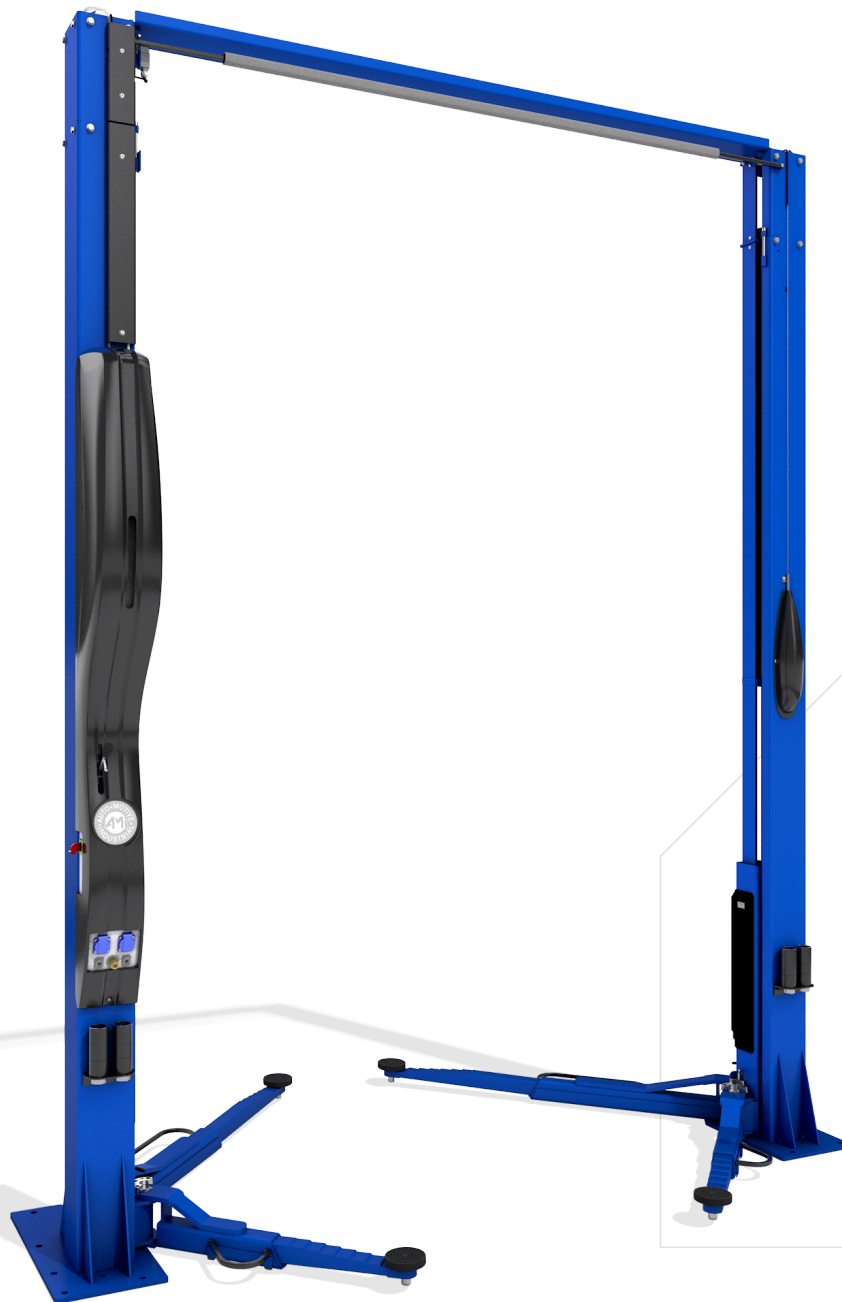
Motor power:
3,0 kW

Minimum thickness of concrete floor C20/25:
135 mm



AMI 4,0 VARIANT

- Load capacity 4000 kg
- Lever control
- Asymmetric design
- Economically profitable hydraulic drive
- Double-acting roof dent protection
- Variety of heights 3670 mm | 4000 mm | 4200 mm | 4400 mm | 4650 mm
- Set of extensions 50 mm | 100 mm
- Ergonomic cover
- Arm lock (SLS - self locking system)
- Easy to operate
- Czech made
- Complies to requirements of ČSN EN 1493:2023



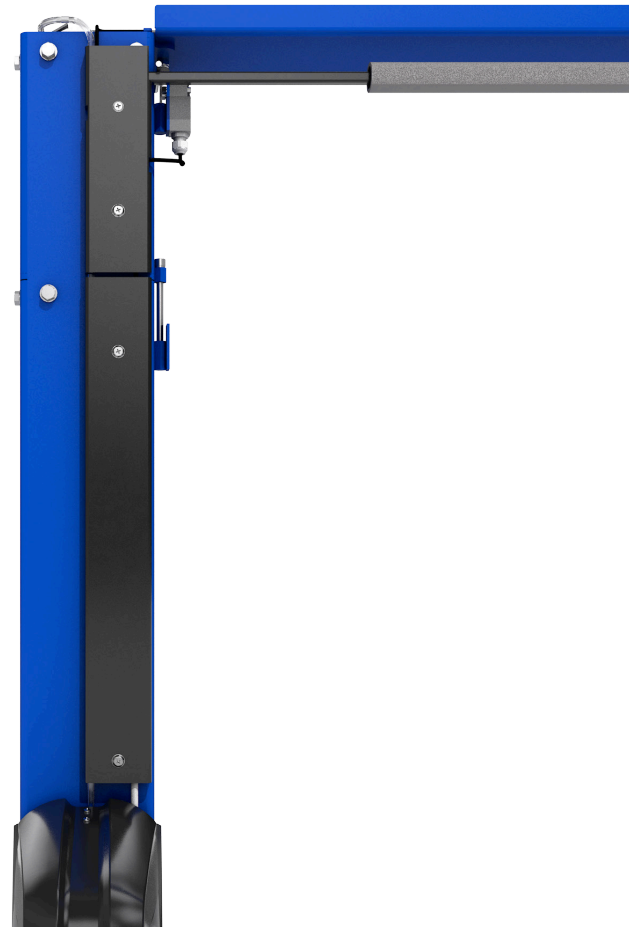
2 x 2-STAGE SHORT ARMS
2 x 2-STAGE LONG ARMS
(STANDARD)



ARM LOCK
SLS - SELF LOCKING SYSTEM
(STANDARD)



TROLLEY COVER "PUR3"
(STANDARD)



Application:
**Passenger vehicles |
 Commercial vehicles**

Maximum load capacity:
4000 kg

Maximum clearance height:
**3520 mm | 3850 mm |
 4050 mm | 4250mm |
 4500 mm**

Maximum clearance width:
2220 mm

Maximum arm height:
1840 mm - 1870 mm

Minimum arm height:
90 mm - 120 mm

Column clearance:
2565 mm

Overall width:
3135 mm

Total height:
**3670 mm | 4000 mm |
 4200 mm | 4400 mm | 4650 mm**

Motor power:
3,0 kW

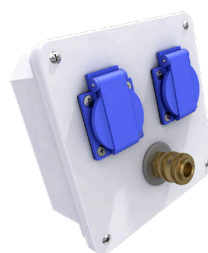
Minimum thickness of
 concrete floor C20/25:
135 mm



VARIANTS OF ARM CONFIGURATIONS
 (MODEL CONFIGURATIONS)



**VARIANTS OF VULCANISED
 PADS AND ADAPTERS**
 (ACCESSORIES)



VARIANTS OF ELECTRO BOXES
 (ACCESSORIES)



AIR REELS
 (ACCESSORIES)



**TECHNICAL
 DATA**

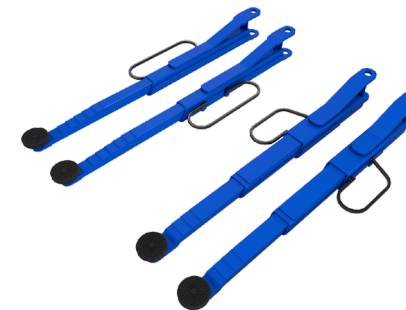


**ADDITIONAL
 ACCESSORIES**



AMI 4,0 PREMIUM

- Load capacity 4000 kg
- Lever control
- Asymmetric design
- Economically profitable hydraulic drive
- Double-acting roof dent protection
- Variety of heights 4100 mm | 4400 mm | 4600 mm | 4800 mm
- Set of extensions 50 mm | 100 mm
- Ergonomic cover
- Arm lock (SLS - self locking system)
- Easy to operate
- Czech made
- Complies to requirements of ČSN EN 1493:2023



2 x 3-STAGE ARMS
2 x 2-STAGE LONG ARMS
(STANDARD)



SET OF EXTENSIONS 50 mm | 100 mm
(STANDARD)



TROLLEY COVER "PUR3"
(STANDARD)



VARIANTS OF ARM CONFIGURATIONS
(MODEL CONFIGURATIONS)



VARIANTS OF VULCANISED PADS AND ADAPTERS
(ACCESSORIES)



VARIANTS OF ELECTRO BOXES
(ACCESSORIES)



ELECTRIC REELS
(ACCESSORIES)



TECHNICAL DATA



ADDITIONAL ACCESSORIES

Application:
Passenger vehicles | Commercial vehicles

Maximum load capacity:
4000 kg

Maximum clearance height:
3920 mm | 4250 mm | 4450 mm | 4650 mm

Maximum clearance width:
2505 mm

Maximum arm height:
2010 mm - 2040 mm

Minimum arm height:
90 mm - 120 mm

Column clearance:
2850 mm

Overall width:
3420 mm

Total height:
4100 mm | 4400 mm | 4600 mm | 4800 mm

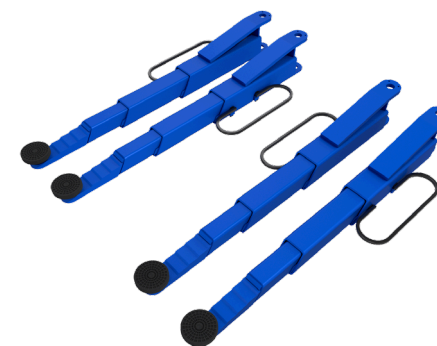
Motor power:
3,0 kW

Minimum thickness of concrete floor C20/25:
135 mm



AMI 5,5 VAN

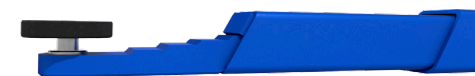
- Load capacity 5500 kg
- Lever control
- Symmetric design
- Economically profitable hydraulic drive
- Double-acting roof dent protection
- Variety of heights 4000 mm | 4300 mm | 4600 mm | 4900 mm | 5200 mm | 5400 mm
- Set of extensions 50 mm | 100 mm
- Ergonomic cover
- Arm lock (SLS - self locking system)
- Easy to operate
- Czech made
- Complies to requirements of ČSN EN 1493:2023



4 x 3-STAGE ARMS VAN
(STANDARD)



ARM LOCK
SLS - SELF LOCKING SYSTEM
(STANDARD)



GRADED ARM PROFILE
(STANDARD)



Application:
**Passenger vehicles |
 commercial vehicles**

Maximum load capacity:
5500 kg

Maximum clearance height:
**3855 mm | 4155 mm |
 4455 mm | 4755 mm |
 5055 mm | 5255 mm**

Maximum clearance width:
2765 mm

Maximum arm height:
1970 mm - 2000 mm

Minimum arm height:
128 mm - 158 mm

Column clearance:
3000 mm

Overall width:
3600 mm

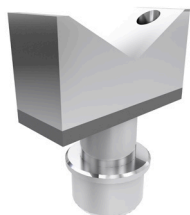
Total height:
**4000 mm | 4300 mm |
 4600 mm | 4900 mm |
 5200 mm | 5400 mm**

Motor power:
3,0 kW

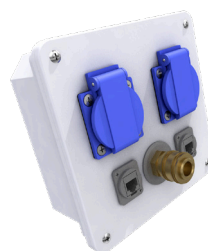
Minimum thickness of
 concrete floor C20/25:
300 mm



VARIANTS OF ARM CONFIGURATIONS
 (MODEL CONFIGURATIONS)



VARIANTS OF ADAPTERS
 (ACCESSORIES)



VARIANTS OF ELECTRO BOXES
 (ACCESSORIES)



AIR REELS
 (ACCESSORIES)



**TECHNICAL
 DATA**

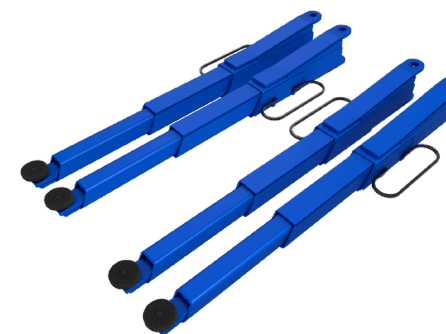


**ADDITIONAL
 ACCESSORIES**



AMI 6,5 | 8,0 BUS

- Load capacity 6500 kg | 8000 kg
- Double-sided button control
- Symmetric design
- Economically profitable hydraulic drive
- Stroke count
- Double-acting roof dent protecton
- Variety of heights 4350 mm | 4700 mm | 5000 mm | 5200 mm | 5400 mm
- Set of extensions 60 mm | 120 mm
- Ergonomic cove
- Arm lock (SLS - self locking system)
- Function of microfeed on the master column, allows the precise drive into the specific place
- Easy to operate
- Czech made
- Complies to requirements of ČSN EN 1493:2023



4 x 3-STAGE ARMS BUS
(STANDARD)



SET OF EXTENSIONS 60 mm | 120 mm
(STANDARD)



ELEKTROBOX EB 2
(STANDARD MASTER, SLAVE)





Application:
Trucks | commercial vehicles

Maximum load capacity:
up to 8000 kg

Maximum clearance height:
4210 mm | 4560 mm | 4860 mm | 5160 mm | 5360 mm

Maximum clearance width:
2800 mm

Maximum arm height:
2145 mm - 2175 mm

Minimum arm height:
145 mm - 175 mm

Column clearance:
3100 mm

Overall width:
3976 mm

Total height:
4350 mm | 4700 mm | 5000 mm | 5200 mm | 5400 mm

Motor power:
3,0 kW

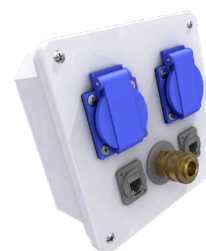
Minimum thickness of concrete floor C20/25:
240 mm | 290 mm



ELECTRIC REELS
(ACCESSORIES)



VARIANTS OF ADAPTERS
(ACCESSORIES)



VARIANTS OF ELECTRO BOXES
(ACCESSORIES)



AIR REELS
(ACCESSORIES)

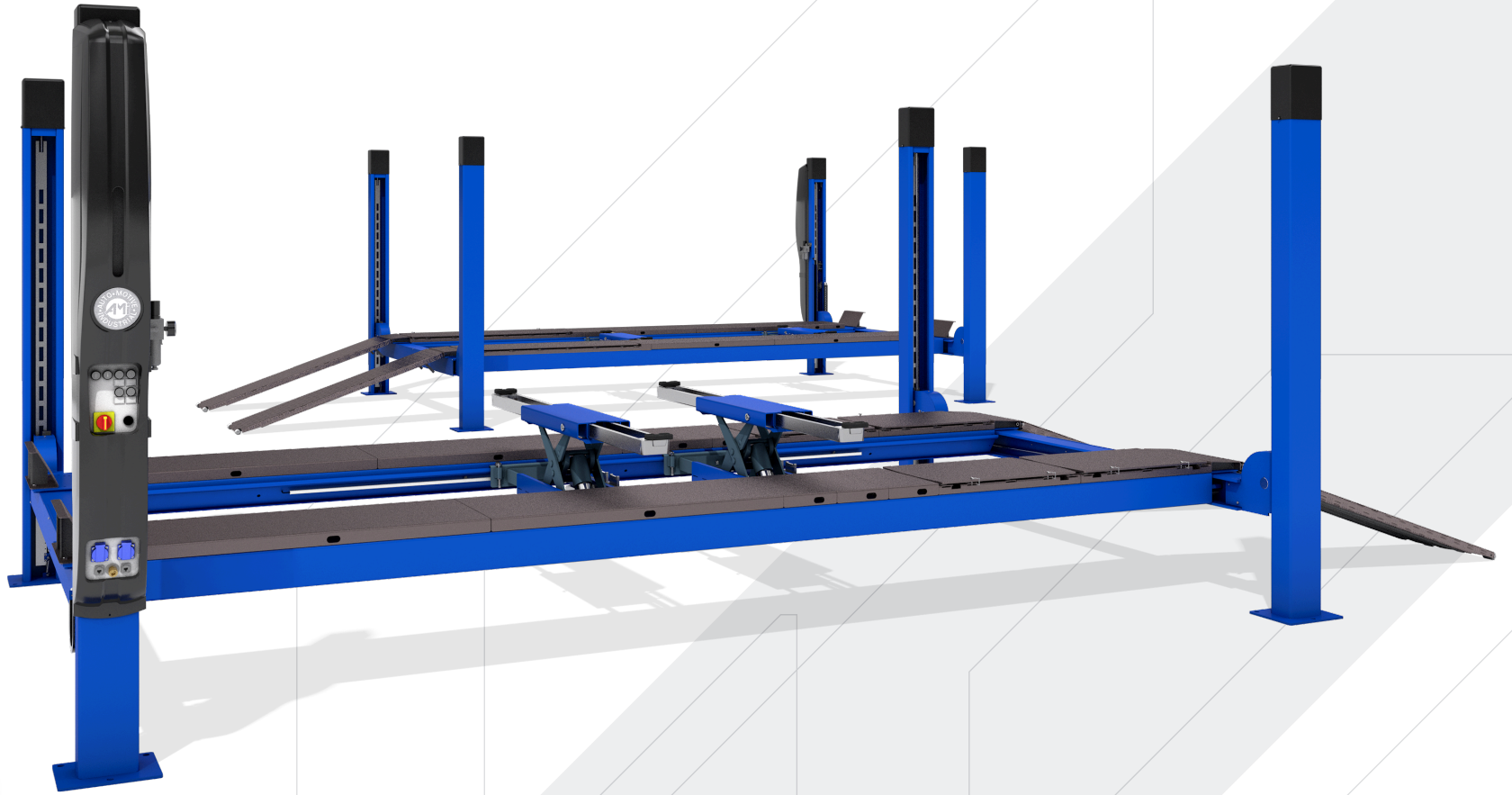


TECHNICAL DATA



ADDITIONAL ACCESSORIES

HYDRAULIC 4-POST LIFTS



01 | 02 | 03
04 | 05 | 06
07 | 08 | 09
10 | 11 | 12
34 | 35 | 36
37 | 38 | 39

10

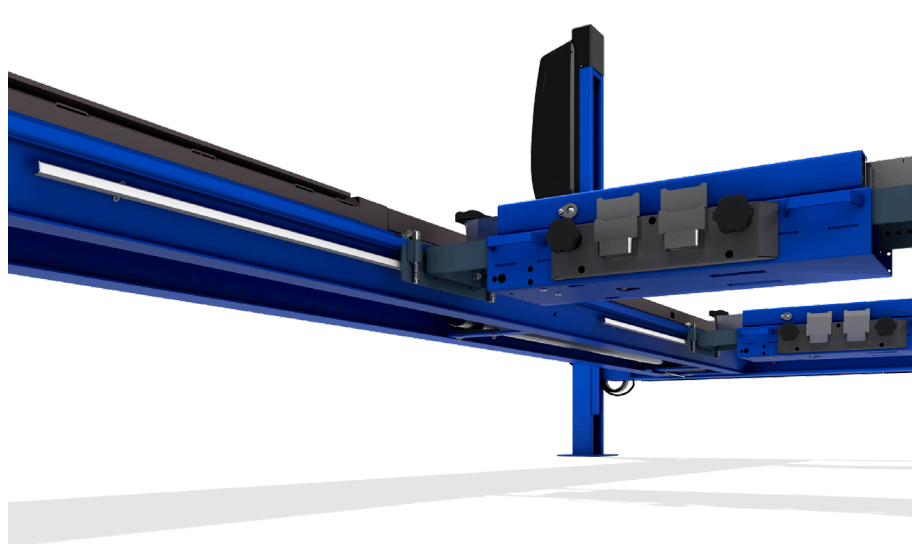
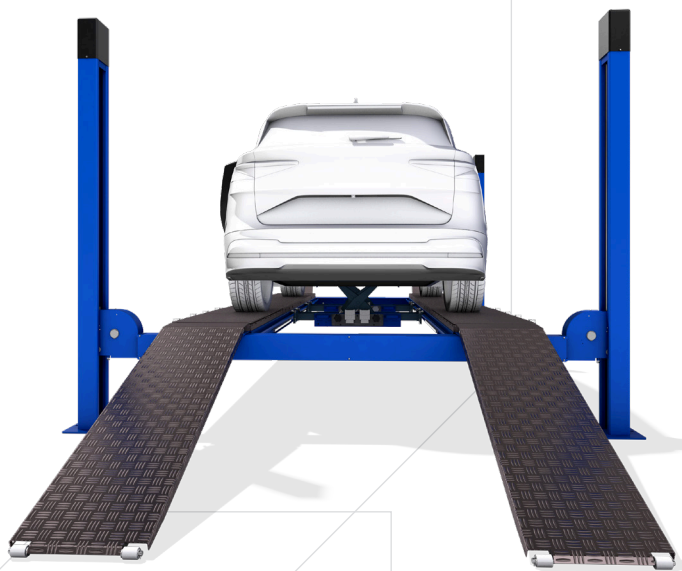
AUTO-MOTIVE
INDUSTRIAL
WARRANTY

AMI 4,0 N-WAY



- Loading capacity 4000 kg
- Designed for 3D geometry measurement
- Symmetric post design
- Variable platform distance (1000 mm ÷ 1700 mm)
- Ergonomic cover
- High stiffness and static stability
- Economically profitable hydraulic drive
- Pneumatic control of gravity latches
- Acoustic stop signalling
- Regulation of lowering speed
- Czech made
- Complies to requirements of ČSN EN 1493:2023

CLEARANCE OPTION
(ACCESSORIES)



Application:
**Passenger vehicles |
 commercial vehicles**

Maximum load capacity:
4000 kg

Maximum clear distance of posts:
2970 mm

Axial distance of the posts:
4800 mm

Clearance width:
2510 mm

Total height:
2440 mm

Overall width:
3340 mm

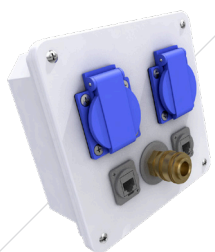
Platform width:
505 mm

Maximum height of platform:
2050 mm

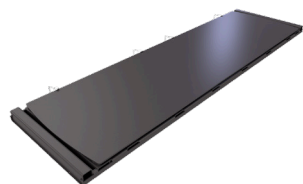
Minimum height of platform:
230 mm

Motor output:
3,0 kW

Minimum thickness
 of concrete floor:
135 mm



VARIANTS OF ELECTRO BOXES
 (ACCESSORIES)



VARIANTS OF FLOATING PLATES
 (ACCESSORIES)



VARIANTS OF HYDRAULIC JACKING BEAMS
 (ACCESSORIES)



LED LIGHTING WITH INTENSITY CONTROL
 (ACCESSORIES)



TECHNICAL DATA



ADDITIONAL ACCESSORIES

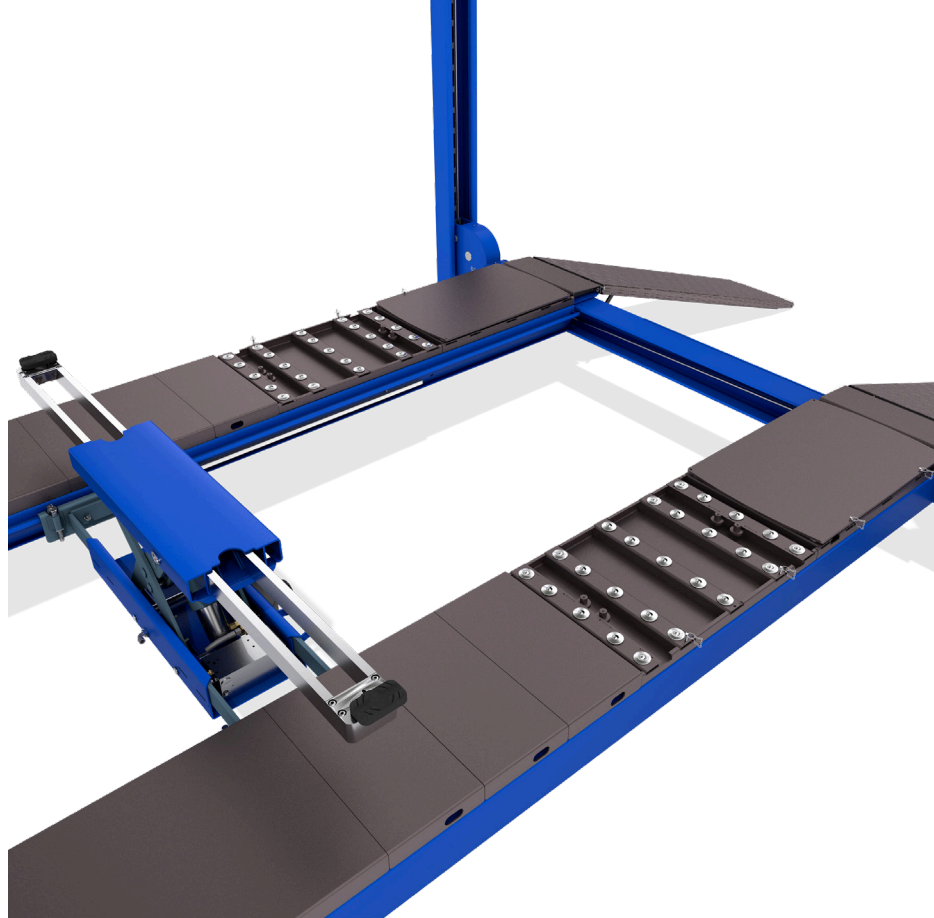


AMI 5,5 N-WAY



- Loading capacity 5500 kg
- Designed for 3D geometry measurement
- Symmetric post design
- Variable platform distance (1000 mm ÷ 1700 mm)
- Ergonomic cover
- High stiffness and static stability
- Economically profitable hydraulic drive
- Pneumatic control of gravity latches
- Acoustic stop signalling
- Regulation of lowering speed
- Czech made
- Complies to requirements of ČSN EN 1493:2023

AL PLATFORM PROTECTION
(ACCESSORIES)



Application:
**Passenger vehicles |
 Commercial vehicles**

Maximum load capacity:
5500 kg

Maximum clear distance of posts:
2970 mm

Axial distance of the posts:
5000 mm | 5450 mm

Clearance width:
2510 mm

Total height:
2440 mm

Overall width:
3340 mm

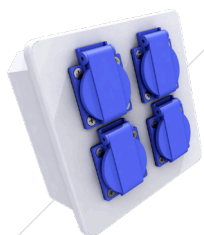
Platform width:
505 mm

Maximum height of platform:
2050 mm

Minimum height of platform:
230 mm

Motor power:
3,0 kW

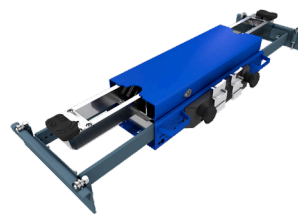
Minimum thickness
 of concrete floor:
160 mm



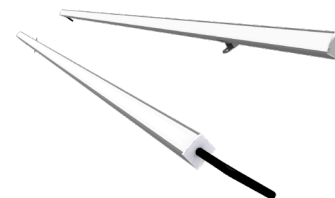
VARIANTS OF ELECTRO BOXES
 (ACCESSORIES)



VARIANTS OF FLOATING PLATES
 (ACCESSORIES)



VARIANTS OF HYDRAULIC JACKING BEAMS
 (ACCESSORIES)



LED LIGHTING WITH INTENSITY CONTROL
 (ACCESSORIES)



TECHNICAL DATA

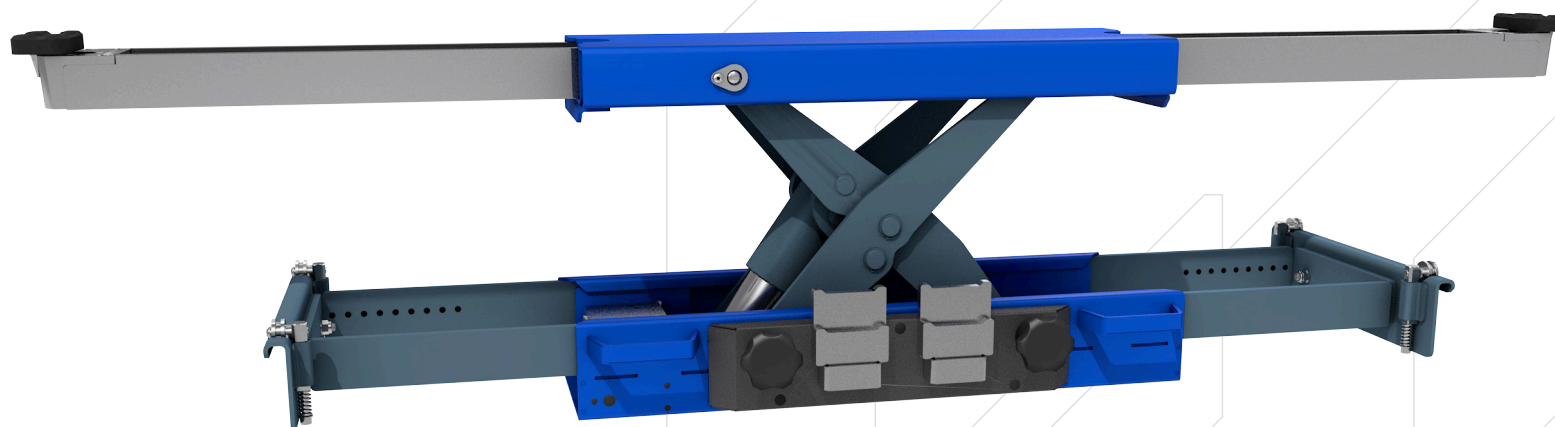


ADDITIONAL ACCESSORIES



AMI J 2,0 | 2,6 | 3,2 RH | VH

- Load capacity up to 3200 kg
- Pneumatic-hydraulic and manual jacking beams
- Allows the precise drive into the specific place
- Easy to operate
- Complies to requirements of ČSN EN 1493:2023



Application:
**Passenger vehicles |
commercial vehicles**

Maximum load capacity:
2000 kg - 3200 kg

Stroke:
250 mm

Lifting frame height:
120 mm - 160 mm

Minimum height:
180 mm - 230 mm

Span of the supporting frame:
780 mm - 1610 mm

Extended span
of the supporting frame:
780 mm - 1865 mm

Weight of Jacking beam:
175 kg

Air supply:
8-10 bar

Air consumption:
400 - 700 l/min

MOBILE 1-POST HYDRAULIC LIFTS



AMI 5,5 | 7,5 TRUCK

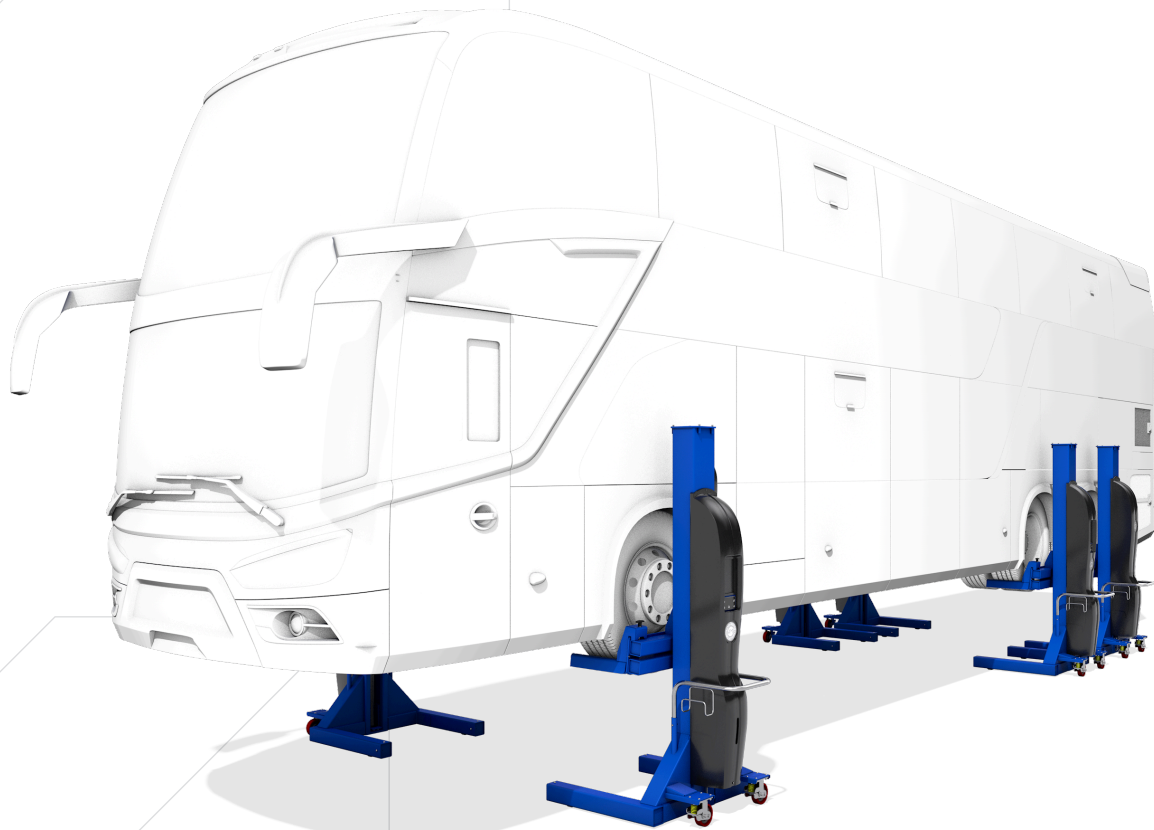
- Load capacity of the post 5500 kg | 7500 kg
- Economically profitable hydraulic drive
- Electronic regulation and synchronisation of operation of the lift
- Integrated display with a touch screen
- Stroke count
- Possibility of remote control by means of signal from the range of 863-868 MHz (according to ETSI)
- Function of precise drive to the required height
- Acoustic signalling, report listings
- Lifting of broad range of vehicles
- Czech made
- Complies to requirements of ČSN EN1493:2023



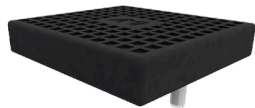
INTEGRATED DISPLAY AND ELECTRO BOX
(STANDARD)



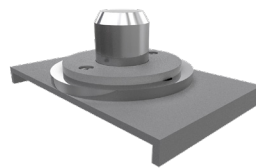
CONTROL PANEL MASTER
(STANDARD)



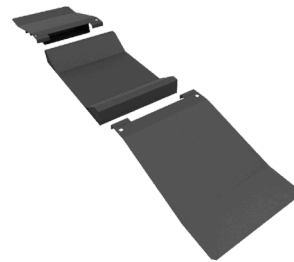
MOBILE TRAVERSE
(ACCESSORIES)



VULCANIZED PADS
(ACCESSORIES)



ADAPTERS FOR TRAVERSE
(ACCESSORIES)



AGRO ACCESSORIES
(ACCESSORIES)



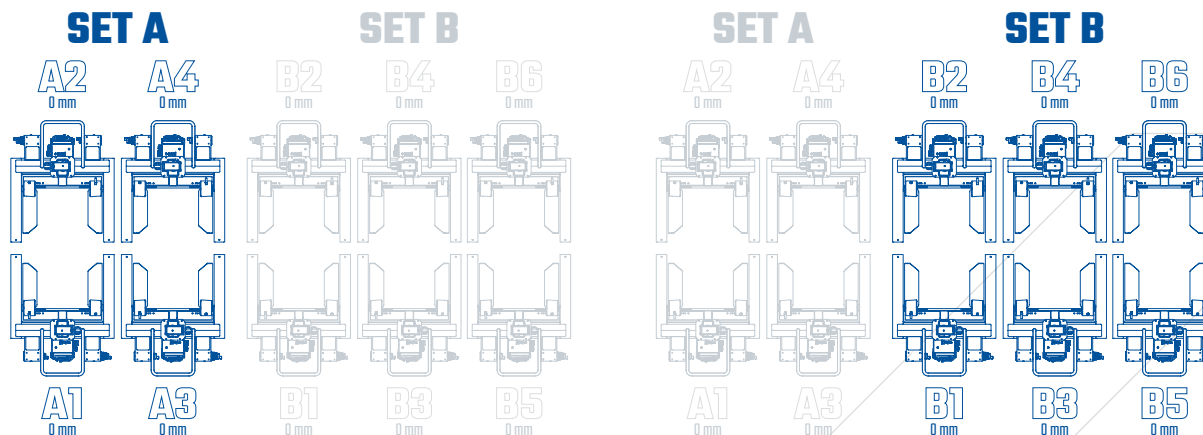
REMOTE CONTROL
(ACCESSORIES)



ELEKTROBOX SLAVE
(ACCESSORIES)

TANDEM CONNECTION

- Automatic detection of independent sets
- Connection variants
 - Set of 4 posts + Set of 4 posts
 - Set of 4 posts + Set of 4 posts + Set of 4 posts
 - Set of 4 posts + Set of 6 posts
 - Set of 6 posts + Set of 6 posts
- Efficient use of equipment
- Possibility of remote control



SET OF 4 POSTS A1-A4 ACTIVE
SET OF 6 POSTS B1-B6 INACTIVE



SET OF 4 POSTS A1-A4 INACTIVE
SET OF 6 POSTS B1-B6 ACTIVE

CONFIGURATION OF SETS



Sets: **4 post**



Sets: **6 post**



Sets: **8 post**



Sets: **10 post**



Sets: **12 post**

Application:
trucks | buses |
agro machines | trolleybuses |
railway vehicles

Maximum load capacity:
Up 45000 kg

Maximum stroke:
1800 mm

Maximal height of the slides:
1918 mm

Total height of the post:
2663 mm

Outside dimensions of the post
width | length | height:
1171 mm | 1376 mm | 2663 mm

Total height with maximum stroke:
3838 mm

Dimensions of lifted tires
- vehicles
14" - 23" | 585 mm - 1160 mm

Dimensions of lifted tires
- agro machines
up to 32" | 1905 mm

Motor power:
1,5 kW

Posts:
4 - 12

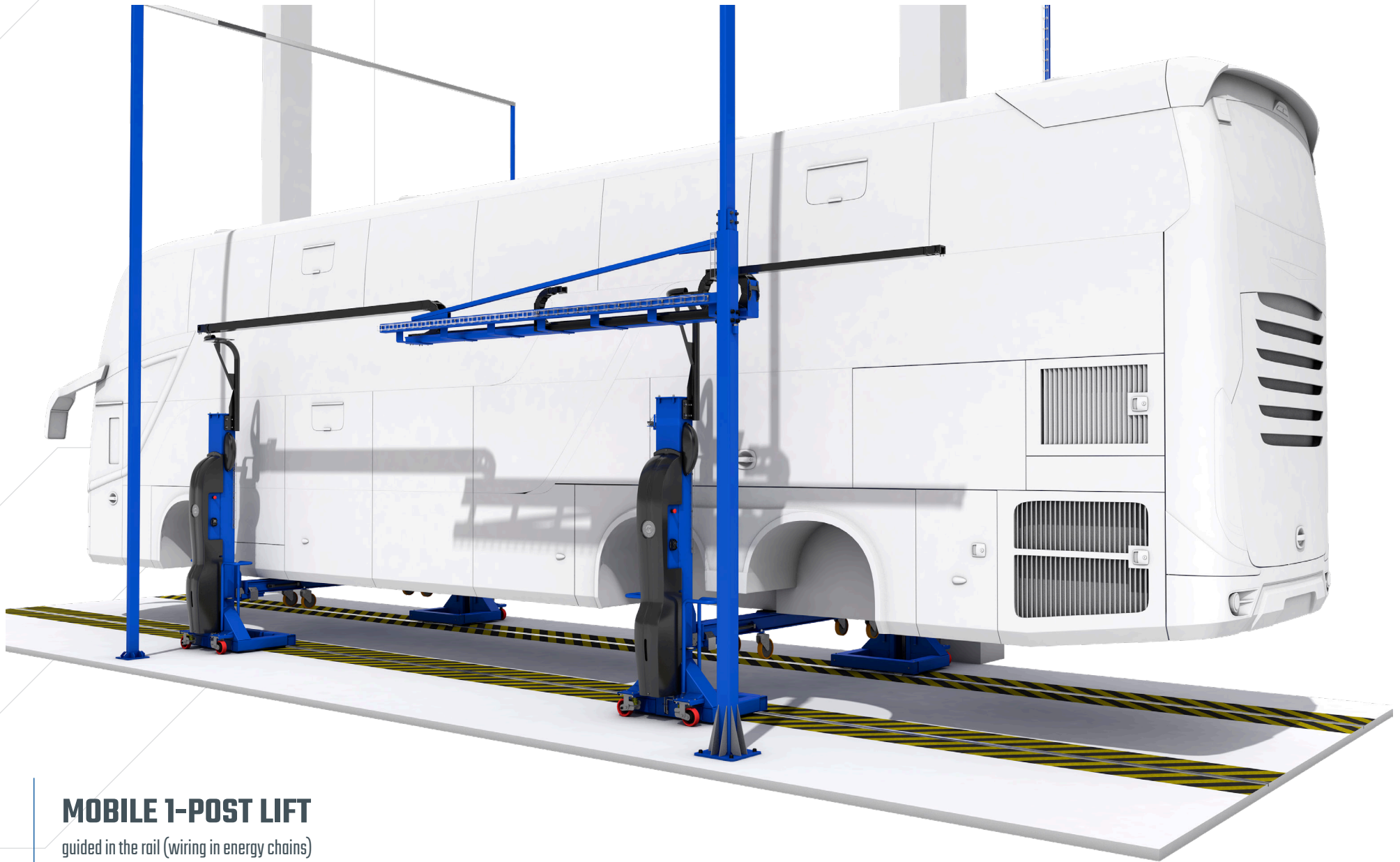


**TECHNICAL
DATA**



**ADDITIONAL
ACCESSORIES**





MOBILE 1-POST LIFT

guided in the rail (wiring in energy chains)



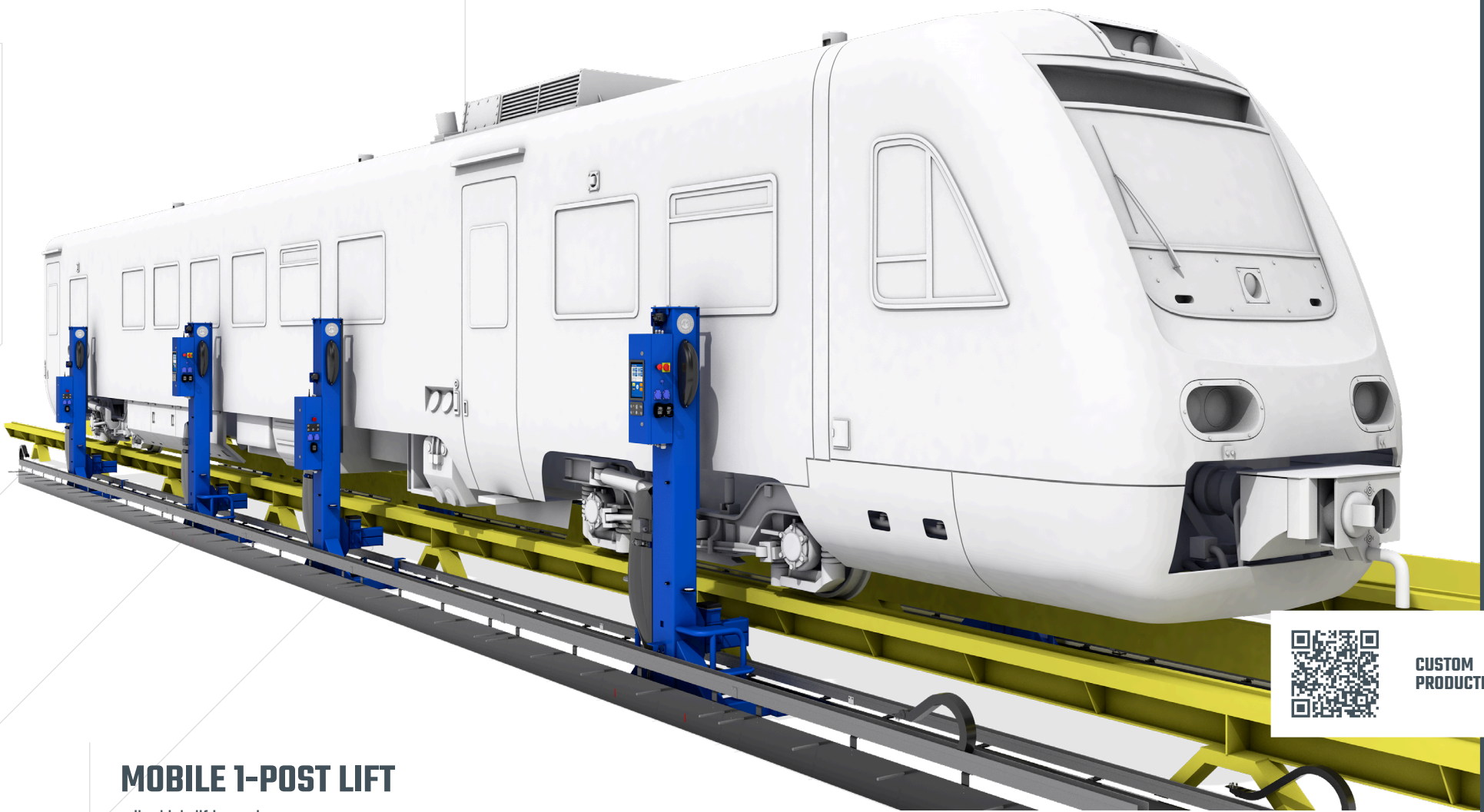
2-POST LIFT

into the control box after painting



2-POST LIFT

for washing box and explosive environment



MOBILE 1-POST LIFT

rail vehicle lifting variant



CUSTOM
PRODUCTION



CUSTOM PRODUCTION AMI



**CZECH MANUFACTURER OF HYDRAULIC LIFTS
AND ACCESSORIES WITH 10 YEARS WARRANTY**



Sokolovská 1169, 570 01 LITOMYŠL, Czech Republic
ID: 25272420 | VAT No.: CZ25272420

Support and sales [Mo – Fr: 07:00-15:30]
+420 461 618 555
info@automotive.cz

www.automotive.cz